



GMT MONTHLY MEMBERSHIP PROGRESS REPORT

Results as of: 3/31/2018

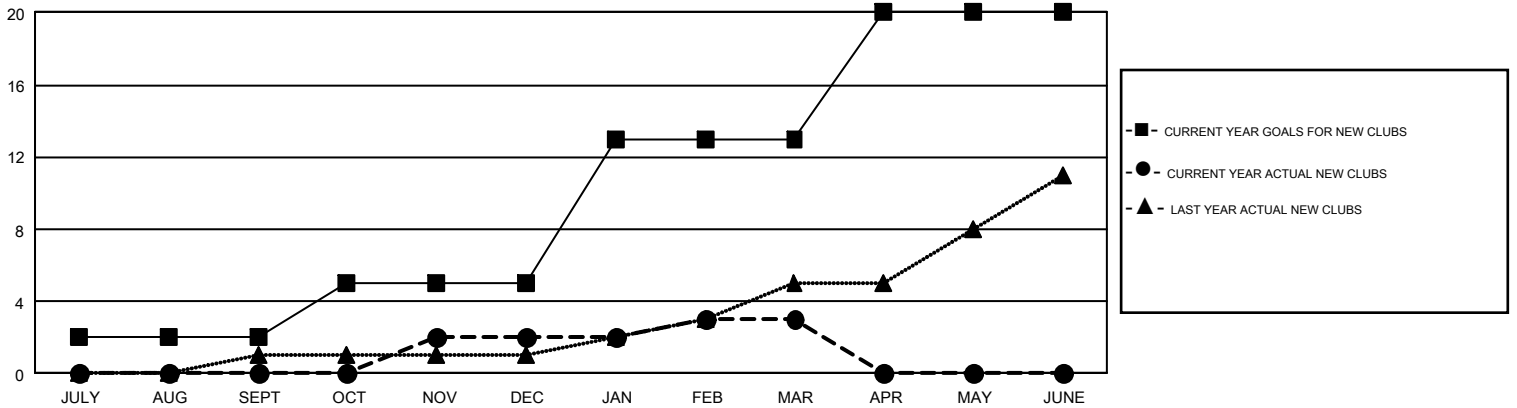
GMT Constitutional Area 2, Group B

GMT: CHRIS LEWIS

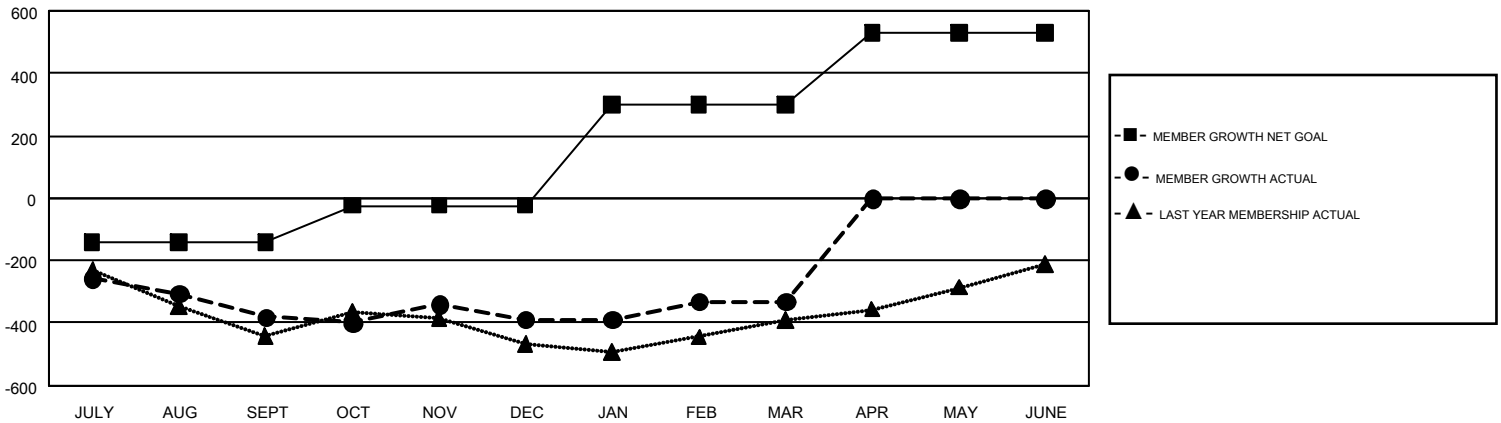
REPORT DOES NOT INCLUDE CLUBS IN UNDISTRICTED AREAS.

Clubs				Members			
RESULTS FOR 2017-2018				RESULTS FOR 2017-2018			
QUARTER	NEW CLUB GOAL	NEW CLUBS	DROPPED CLUBS	QUARTER	MEMBER GROWTH NET GOAL	MEMBER GROWTH ACTUAL	DROPPED MEMBERS ACTUAL (including transfers)
JULY/AUG/SEPT	2	0	1	JULY/AUG/SEPT	-140	275	586
OCT/NOV/DEC	3	2	5	OCT/NOV/DEC	116	644	596
JAN/FEB/MAR	8	1	1	JAN/FEB/MAR	323	551	433
APR/MAY/JUNE	7	0	0	APR/MAY/JUNE	231	0	0

GOALS AND ACTUAL NEW CLUBS CUMULATIVE



GOALS AND ACTUAL MEMBERS CUMULATIVE



DROPPED CLUBS: 7	429 CLUBS OF 771 ADDED 1 OR MORE NEW MEMBERS	GENDER DISTRIBUTION MALE 13,127 (70.17%) FEMALE 5,580 (29.83%)
DROPPED MEMBERS DECEASED 209 CLUB CANCELLED 76 OTHER 1,329 TOTAL 1,614	CLICK HERE FOR CUMULATIVE MEMBERSHIP DATA	TOTAL FAMILY UNIT MEMBERS 3,478 FAMILY MEMBERS PAYING HALF DUES 1,780